

# DCP-2000

## JPEG2000 - MPEG2 DIGITAL CINEMA SERVER

### Multi-File Playback

JPEG2000 Movies and Pre-Show  
MPEG2 MXF Interop Movies, Pre-Show  
and Alternative Content

### 2D and 3D Movie Playback

3D JPEG2000 Movie Playback  
REAL D and Dual Projectors Supported

### 2k and 4k Resolution Playback

2k and 4k File Playback  
4k Files at 4k Playback Resolution (Optional)

### Enhanced Security

TI's CineLink II™ Strong Link Encryption  
Thomson's NexGuard™ Forensic Watermarking  
Philips' CineFence™ Forensic Watermarking  
FIPS 140-2 Level 3 Certified

**#1 In Installations**

Over 4000 Units in Operation!



The DCP-2000 from Doremi Cinema was the first commercially available server capable of playing JPEG2000 digital movies conforming to DCI specifications. Today, it is by far the most installed cinema server and has attained over three million digital showings.

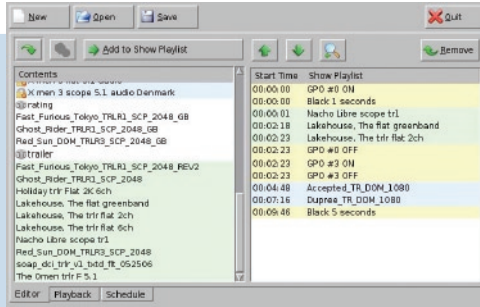
Doremi continues to add advanced features to keep the DCP-2000 comfortably ahead of the competition. Some of these features include 3D playback, CineLink II strong link encryption, and Thomson's NexGuard and Philips' CineFence forensic watermarking making the DCP-2000 the most secure server on the market. In addition, it has received FIPS 140-2 Level 3 security certification.

Each DCP-2000 server includes the CineLister software utility that provides effortless scheduling and playlist administration. Playlists can include both JPEG2000 and MPEG2 movie files and preshow content files.

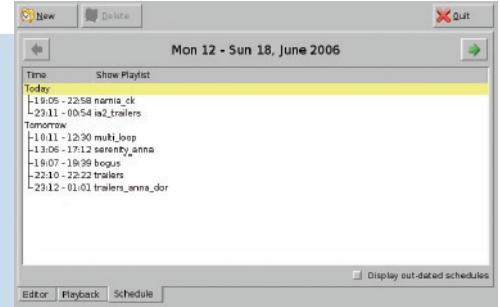
MOVING DIGITAL  
CINEMA FORWARD

doremi  
cinema

# SOFTWARE



Event Editing Screen



Play List Scheduling Screen

## CineLister Software

CineLister allows the operator to build and play composition playlists as well as full session playlists. Playlists can include both JPEG2000 and MPEG2 movie files and pre-show content files.

The graphic user interface simplifies the management of image files and creation of new image clips. CineLister's extensive playlist creation capability can be used for on-line playback and play list scheduling.

# SPECIFICATIONS

## PLAYBACK

- JPEG2000 2K or 4K movie and pre-show file playback at 2K resolution
  - 12-bit 444 (XYZ, RGB) on dual link HD-SDI
- MPEG2 MXF interop movie, pre-show and alternative content file playback
- JPEG2000 4K movie file playback at 4K resolution (optional)
- 3D - JPEG2000 movies and 48p playback via Dual 10-bit 422 (YPbPr/YCxCz)

## SECURITY

- TI's CineLink II™ Strong Link Encryption
- Thomson's NexGuard™ Forensic Watermarking
- Philips' CineFence™ Forensic Watermarking
- FIPS 140-2 Level 3 Security Certified

## INTERFACE

- Gigabit Ethernet for file transfer
- Gigabit Ethernet for control & subtitling
- RS-422 serial control port
- USB2.0

## STORAGE

- 800GB of RAID5 storage

## AUDIO

- AES/EBU Audio 16 channels
  - Single DB-25 connector
- Balanced or Unbalanced Analog Audio 8 channels (two options available)
  - Single DB-25 connector internal board
  - Single DB-25 connector external 1RU chassis

## GPIO

- 8 optically isolated inputs
- 8 open collector outputs

## VIDEO OUTPUT

- Dual link HD-SDI with physical link encryption

## OUTPUT RESOLUTION

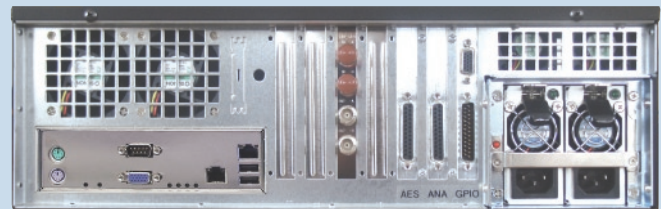
- Dual link
  - 2048 x 1080 24p 4:4:4 12-bit
- Two single links
  - 2048 x 1080 24p 4:2:2 10-bit

## POWER

- Dual-Redundant Power Supply
- 100-240VAC 50-60Hz (350W max)

## DIMENSIONS

- 3U Rack Unit
- 19" x 20.5" x 5.25" inch
- (48 x 52 x 13 cm)



Rear Panel

**Doremi Cinema LLC.** Burbank, California USA  
 tel +1-818 562-1101 - [www.doremicinema.com](http://www.doremicinema.com)  
**Doremi Labs, Europe** Sophia Antipolis, France  
 tel +33 (0) 492 952 830 - [www.doremilabs.fr](http://www.doremilabs.fr)  
**Doremi Labs LLC - Japan** Tokyo, Japan  
 tel +81 (0) 3 3370 0401 - [www.doremilabs.co.jp](http://www.doremilabs.co.jp)

